

# NORTHERN SPICEBUSH

(*Lindera benzoin*)



## NORTHWEST MICHIGAN INVASIVE SPECIES NETWORK

Protecting, enhancing, and promoting Northwest Michigan's natural communities through terrestrial invasive plant management and outreach.

Michaela Medina



### Is spicebush right for you?



5-15 ft tall  
8-15 ft wide

April-May



To learn more about how you can help protect our wild places, visit [HabitatMatters.org](https://HabitatMatters.org)

## Key Features:



Tom Potterfield

### Flowers

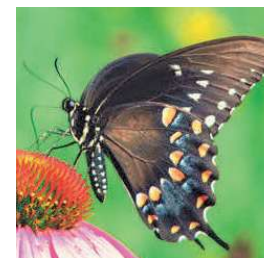
One of the first shrubs to flower in spring, spicebush supports early pollinators--a great alternative to forsythia.



Cody Hough

### Fruits

Bright red fruits are produced in late summer. Male and female shrubs are needed for fruit production.



Lisa Brown

### Visitors to Explore

Hosts this spicebush swallowtail butterfly and its caterpillar! Fruits are high in the fats birds need for energy in fall and winter.