

# GREY-HEADED CONEFLOWER

(*Ratibida pinnata*)



NORTHWEST MICHIGAN  
INVASIVE SPECIES NETWORK

Protecting, enhancing, and promoting Northwest Michigan's natural communities through terrestrial invasive plant management and outreach.

Ron Erwin



## Key Features:



Grownnative.org

### Flowers

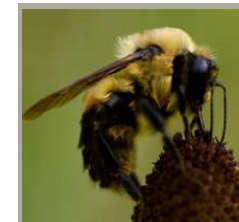
Golden summer blooms with an intriguing dark center offer cheery colors. Seedheads smell of licorice when crushed.



Noppado Paothong

### Easy to Grow

Robust plant that can grow in moist or dry habitats and many kinds of soil. Hardy and not easily outcompeted by other plants.

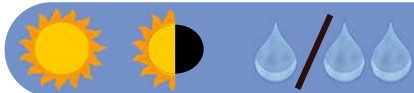


Carolyn Kaster

### Visitors to Explore

Attractive to many kinds of pollen and nectar seeking insects, especially beneficial pollinators like bees and butterflies.

Is grey-headed coneflower right for your garden?



4-5 ft tall

July-Sept

To learn more about how you can help protect our wild places, visit [HabitatMatters.org](https://HabitatMatters.org)