

HOARY VERVAIN

(*Verbena stricta*)



NORTHWEST MICHIGAN
INVASIVE SPECIES NETWORK

Protecting, enhancing, and promoting Northwest Michigan's natural communities through terrestrial invasive plant management and outreach.

Peter Gorman



Is hoary vervain right for your garden?



2-4 ft tall

1.5-2 ft wide

July-Sept.



To learn more about how you can help protect our wild places, visit HabitatMatters.org

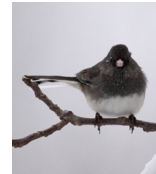
Key Features:



Thomas L. Muller

Late Color

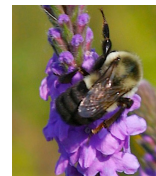
Blooms into late summer, adding a brush of purple to your garden.



Matt Tillett

Seeds

Seeds feed a variety of birds through the winter time, such as this dark-eyed junco (*Junco hyemalis*).



Dan Mullen

Visitors to Explore

Dense flower clusters attract butterflies, native bees, and other pollinating insects. Verbena bee (*Calliopsis verbenae*) specializes on this plant.