

WILD SENNA

(*Senna hebecarpa*)



NORTHWEST MICHIGAN INVASIVE SPECIES NETWORK

Protecting, enhancing, and promoting Northwest Michigan's natural communities through terrestrial invasive plant management and outreach.

Julie Makin



Key Features:



Julie Makin

Flowers

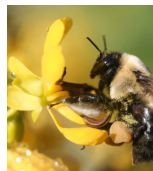
Unique clusters of yellow and cream flowers offer an intriguing late summer bloom.



John Hilty

Nectar

Gland on the stem secretes nectar to attract insects, including ants, ladybird beetles, and flies to protect against attack.



Benjamin Vogt

Visitors to Explore

Pollinators are primarily bumblebees. Some caterpillars feed on the foliage, which feeds young birds.

Is wild senna right for your garden?



5-6 ft tall

July-Aug

To learn more about how you can help protect our wild places, visit HabitatMatters.org